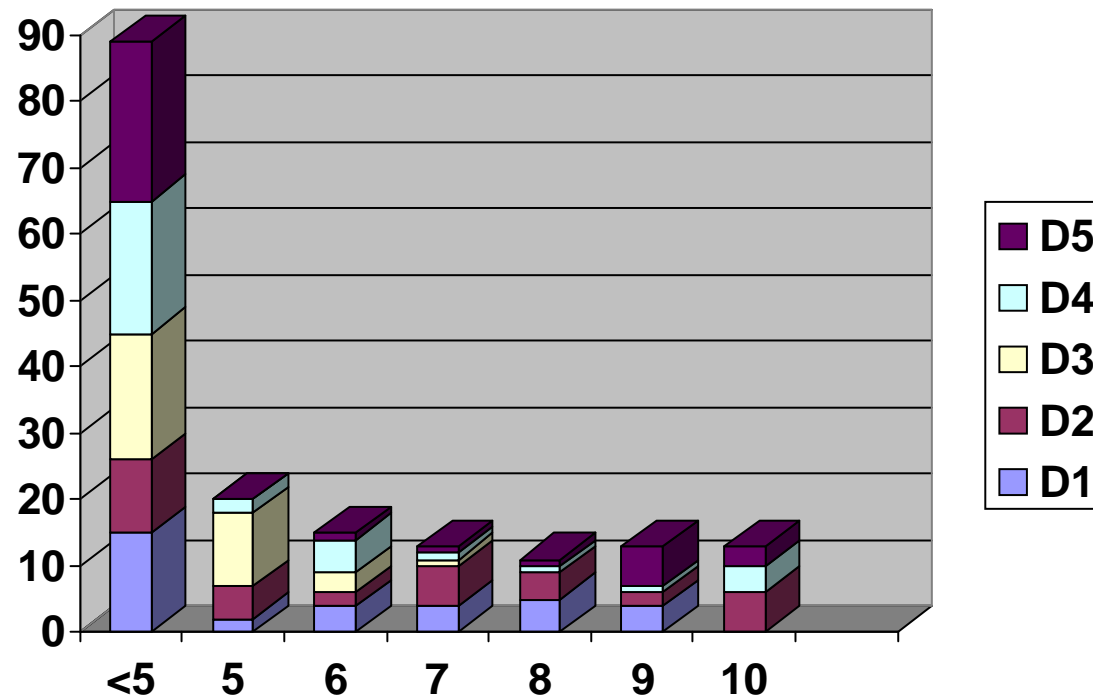


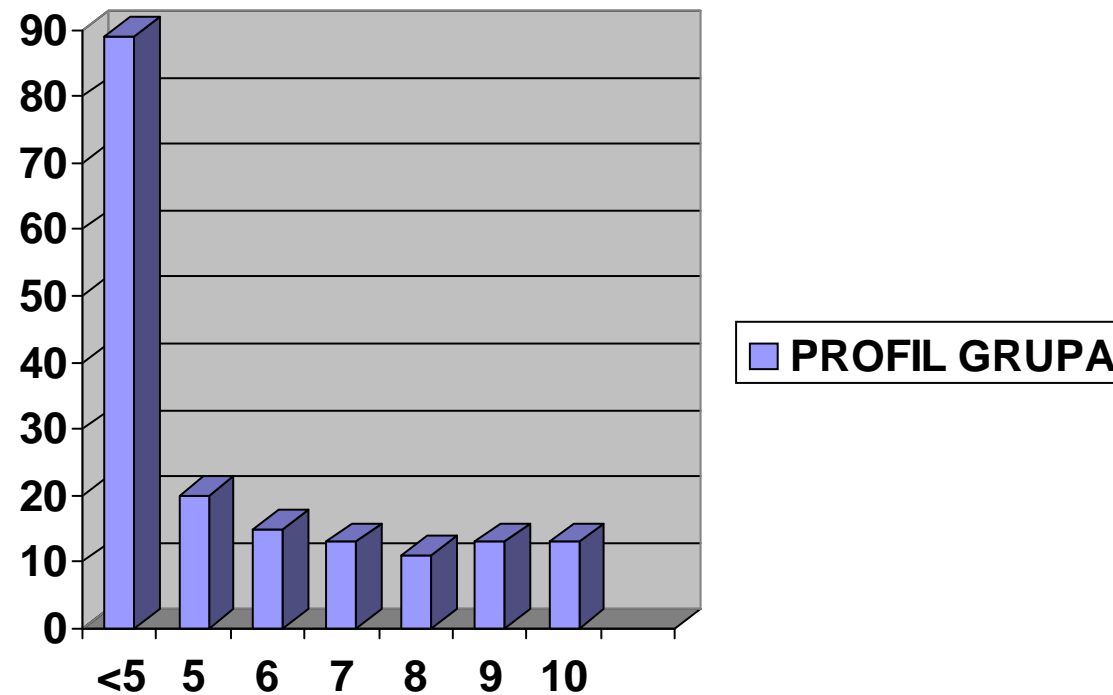
# PROFILE DE NOTARE

2002

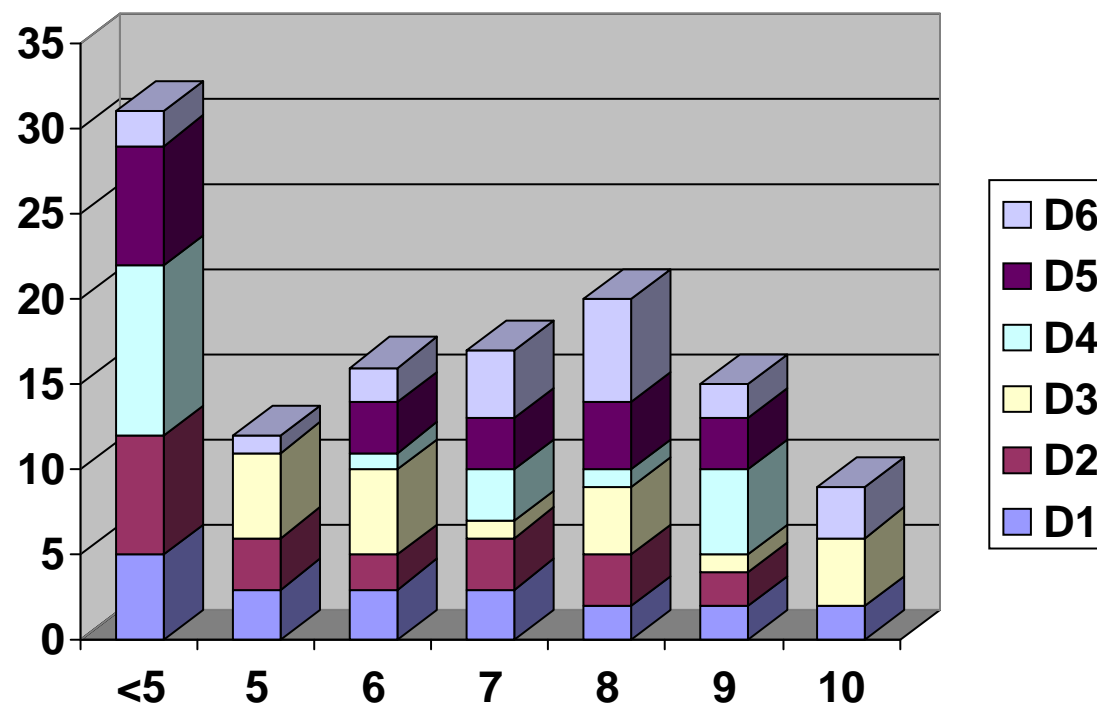
# FACULTATEA DE ELECTROTEHNICA



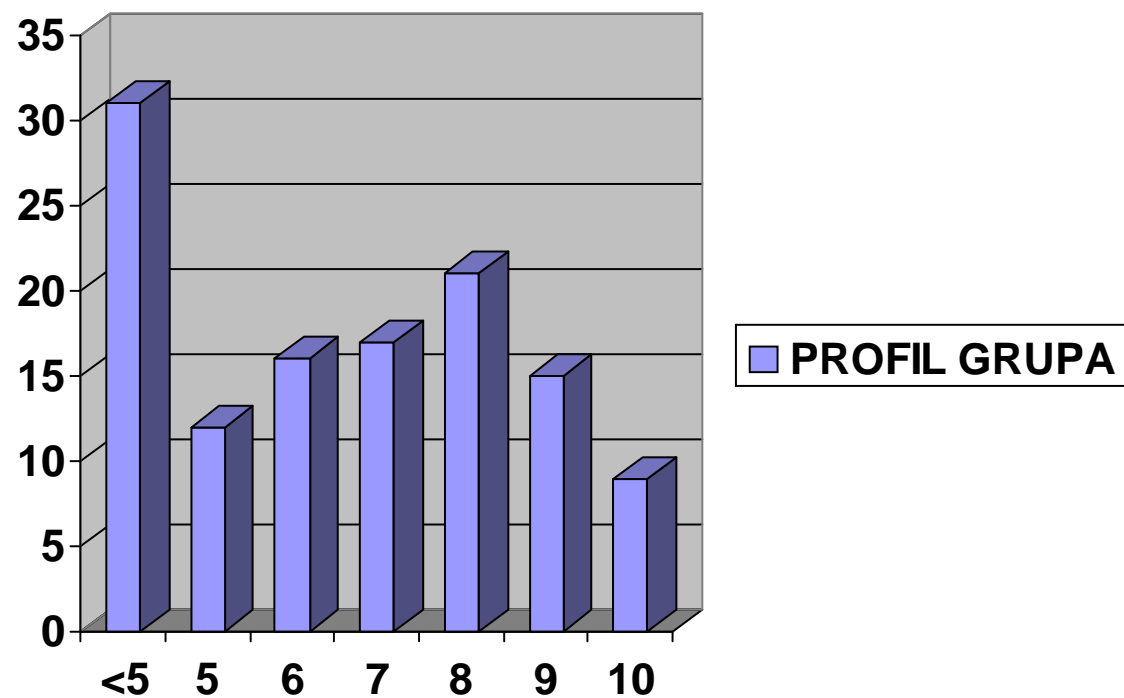
# FACULTATEA DE ELECTROTEHNICA



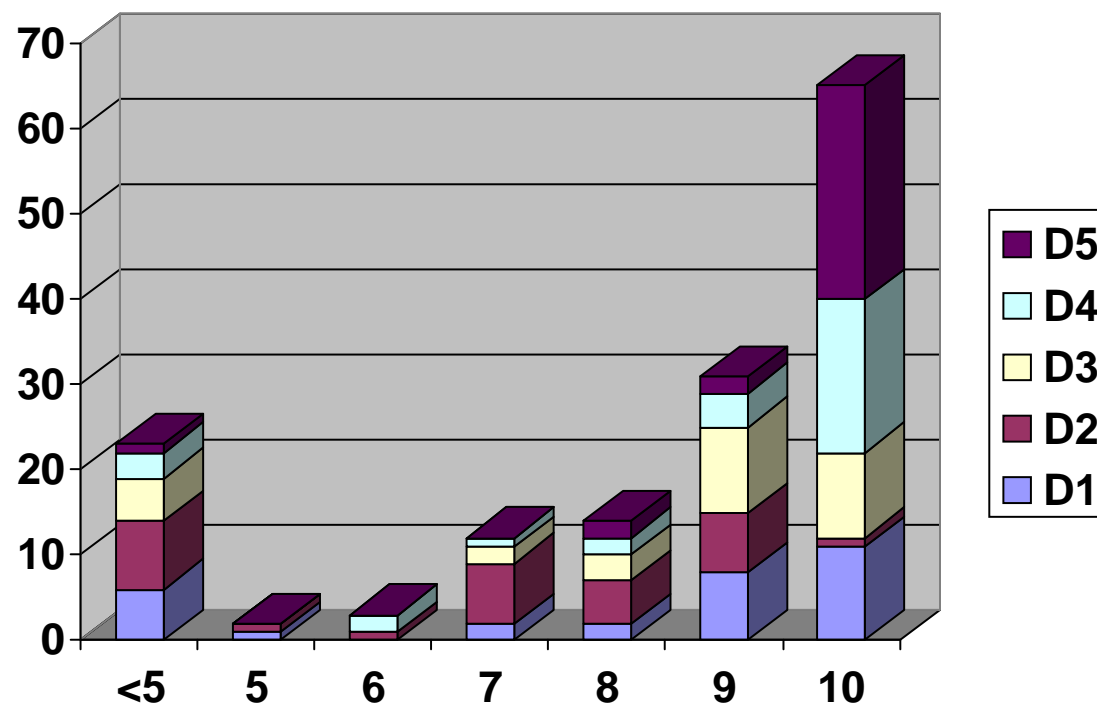
# FACULTATEA DE CHIMIE



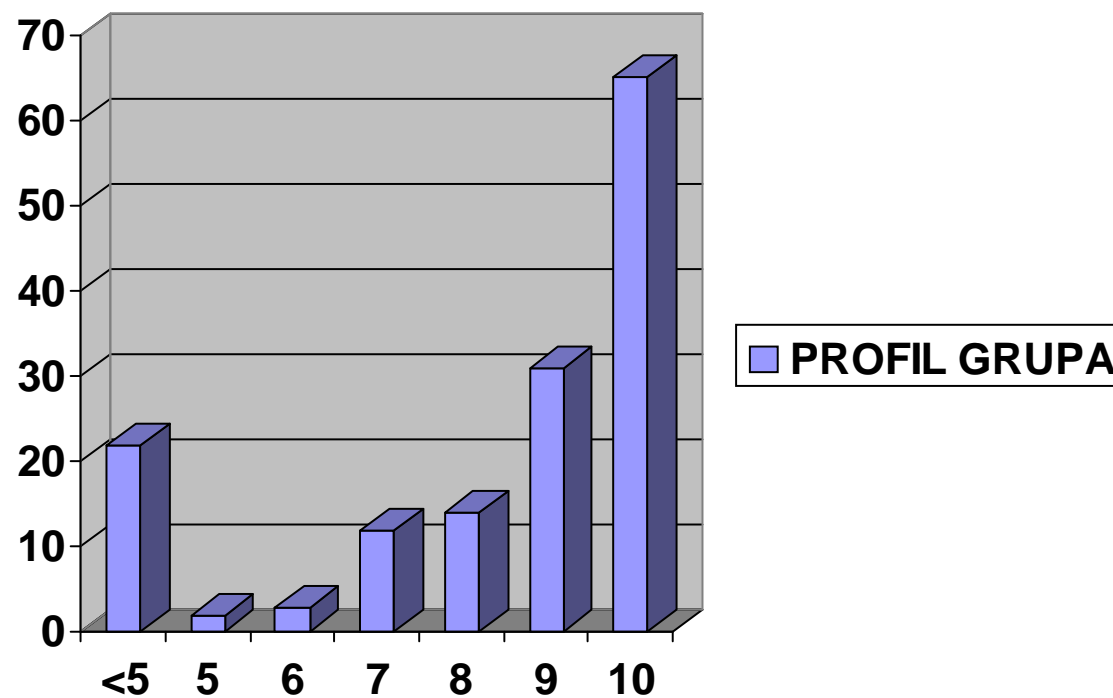
# FACULTATEA DE CHIMIE



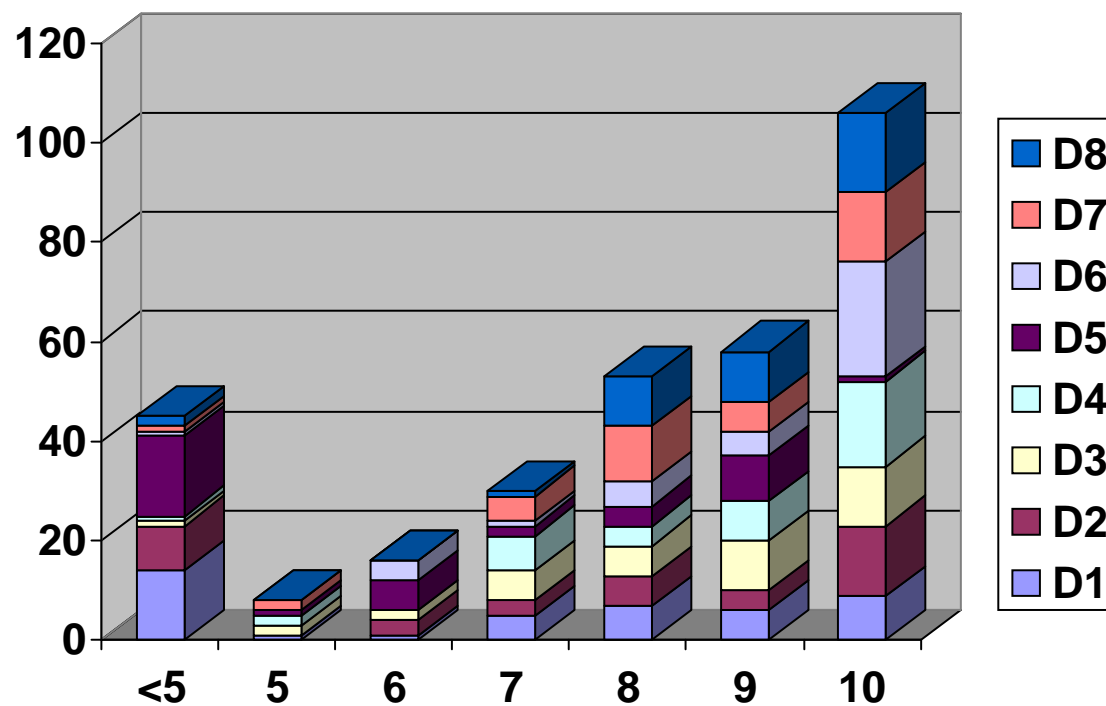
# FACULTATEA DE DREPT



# FACULTATEA DE DREPT

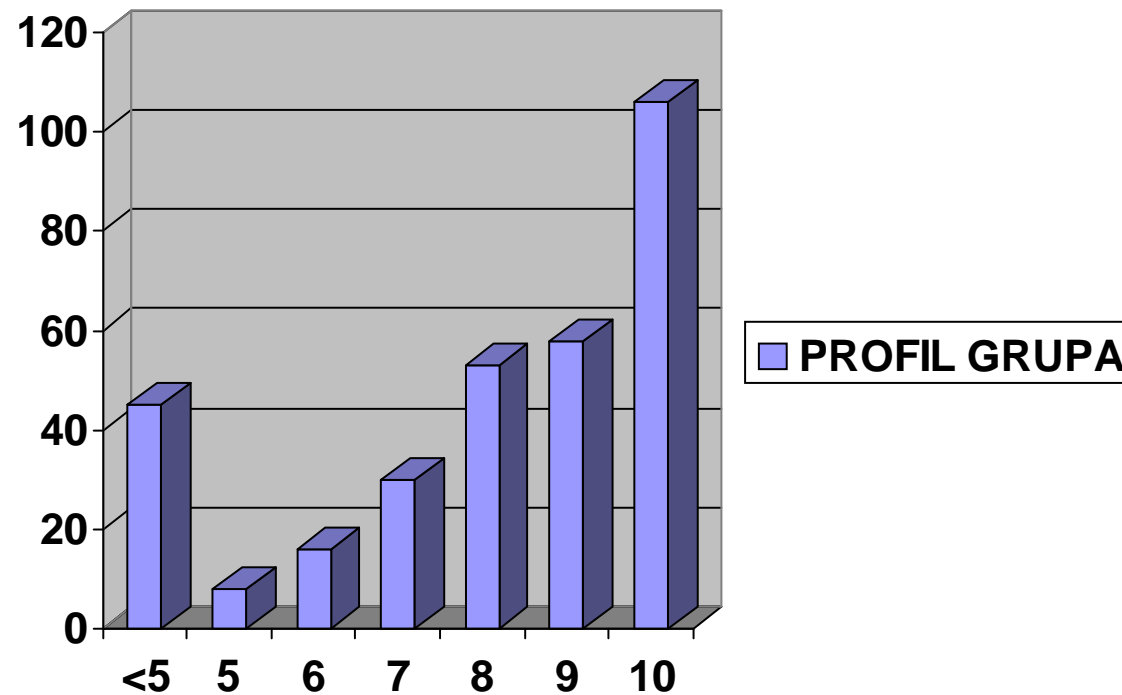


# FACULTATEA DE ISTORIE, FILOSOFIE, GEOGRAFIE



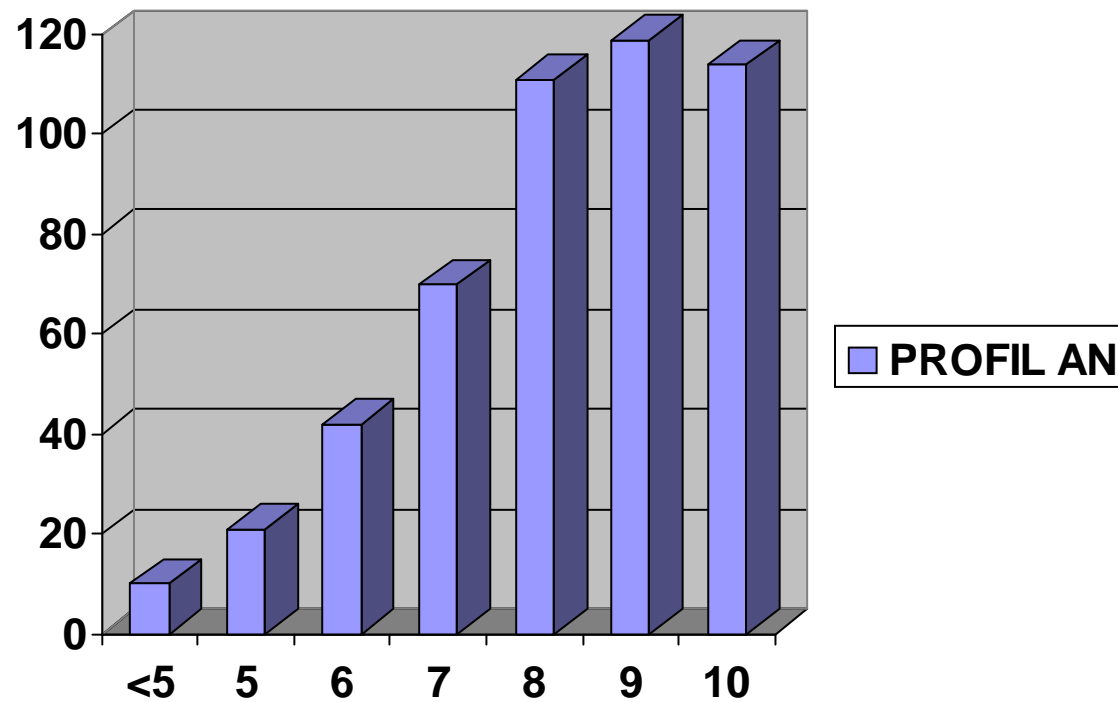


# FACULTATEA DE ISTORIE, FILOSOFIE, GEOGRAFIE



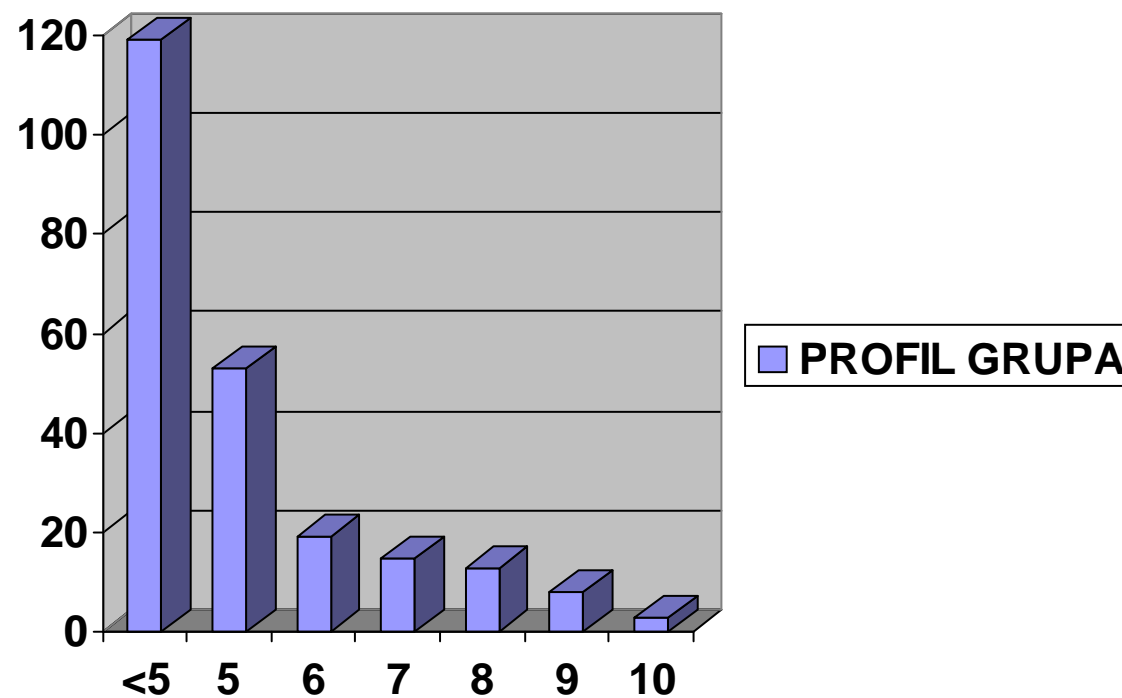


# FACULTATEA DE LITERE

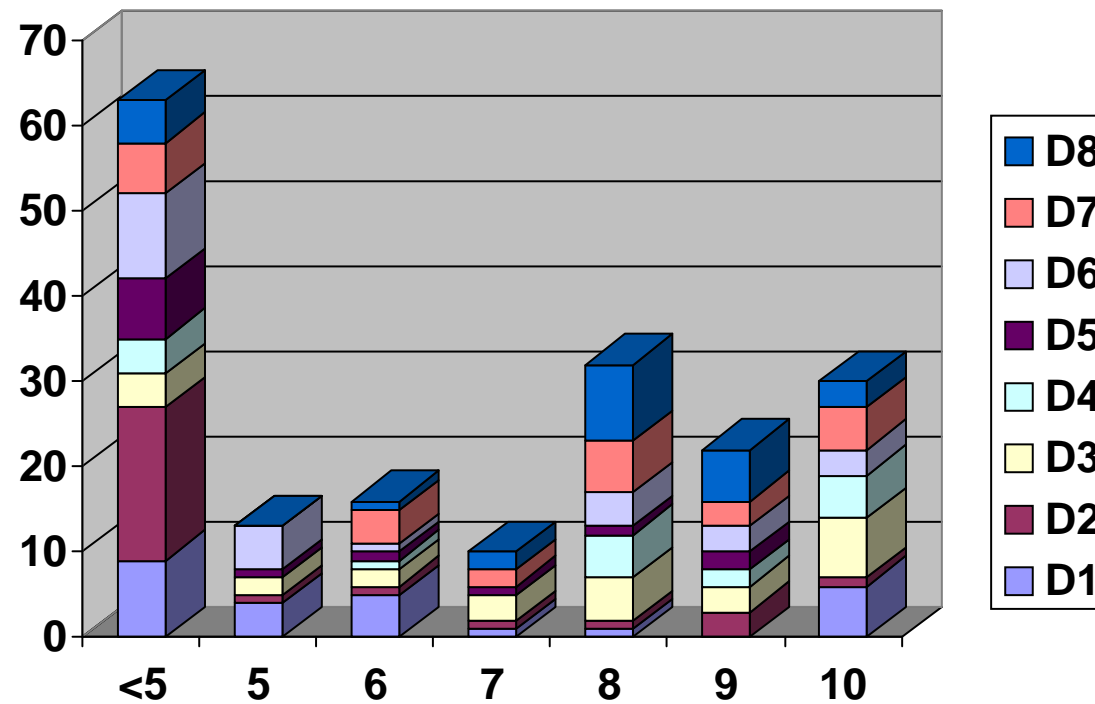




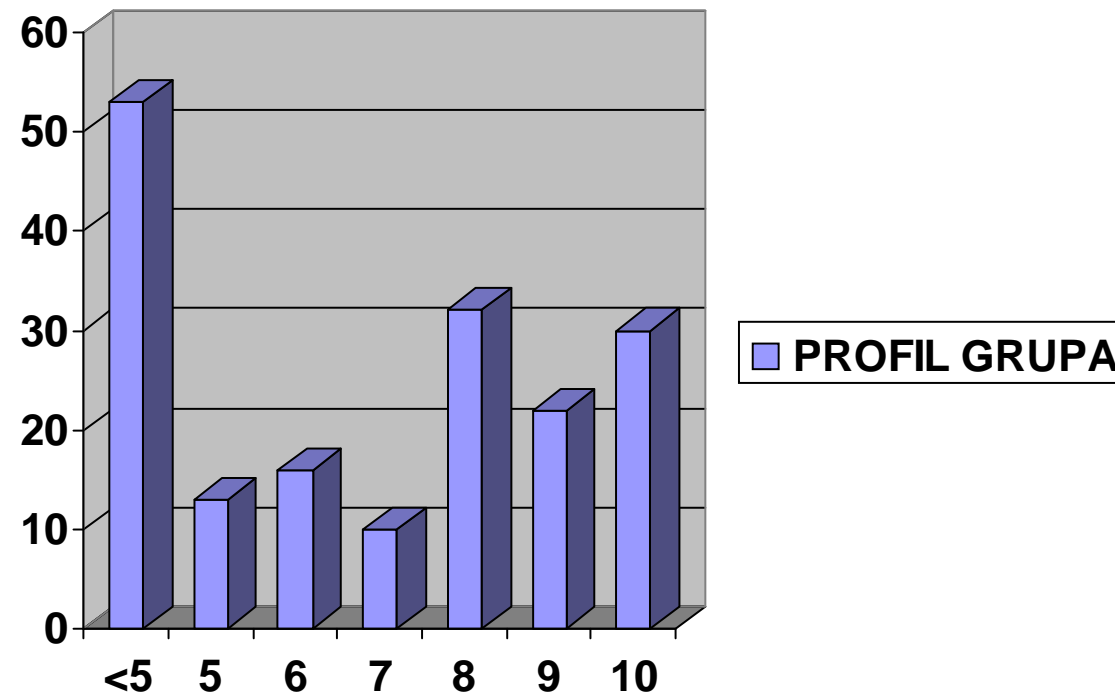
# FACULTATEA DE MECANICA



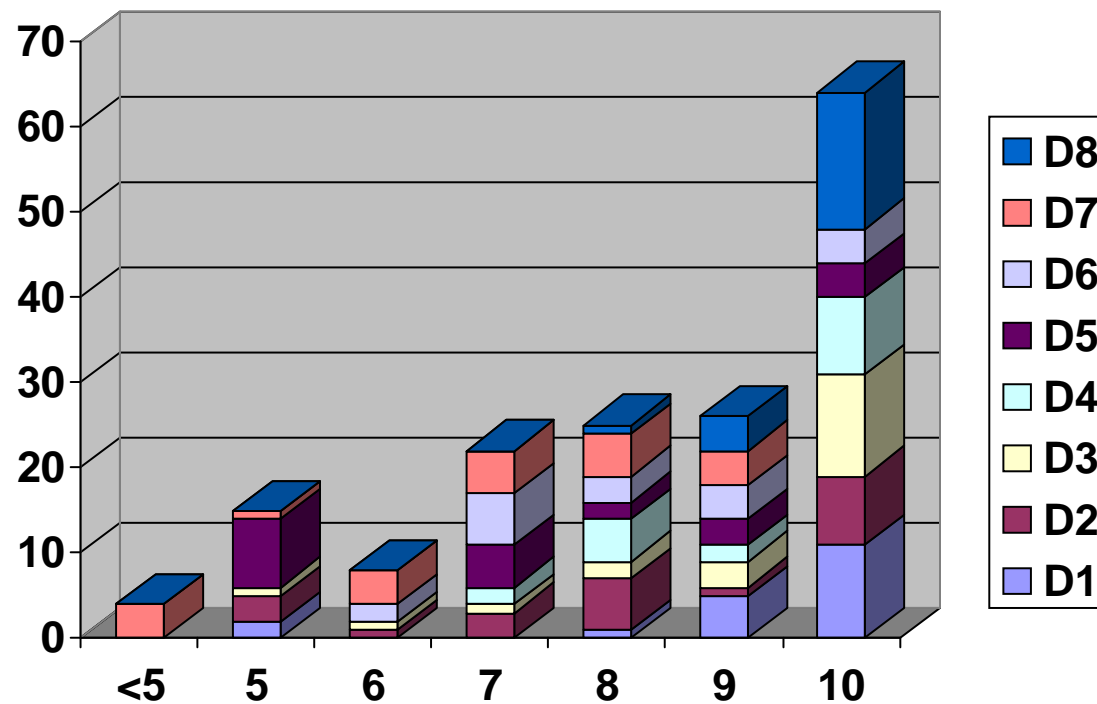
# FACULTATEA DE MATEMATICA- INFORMATICA



# FACULTATEA DE MATEMATICA- INFORMATICA

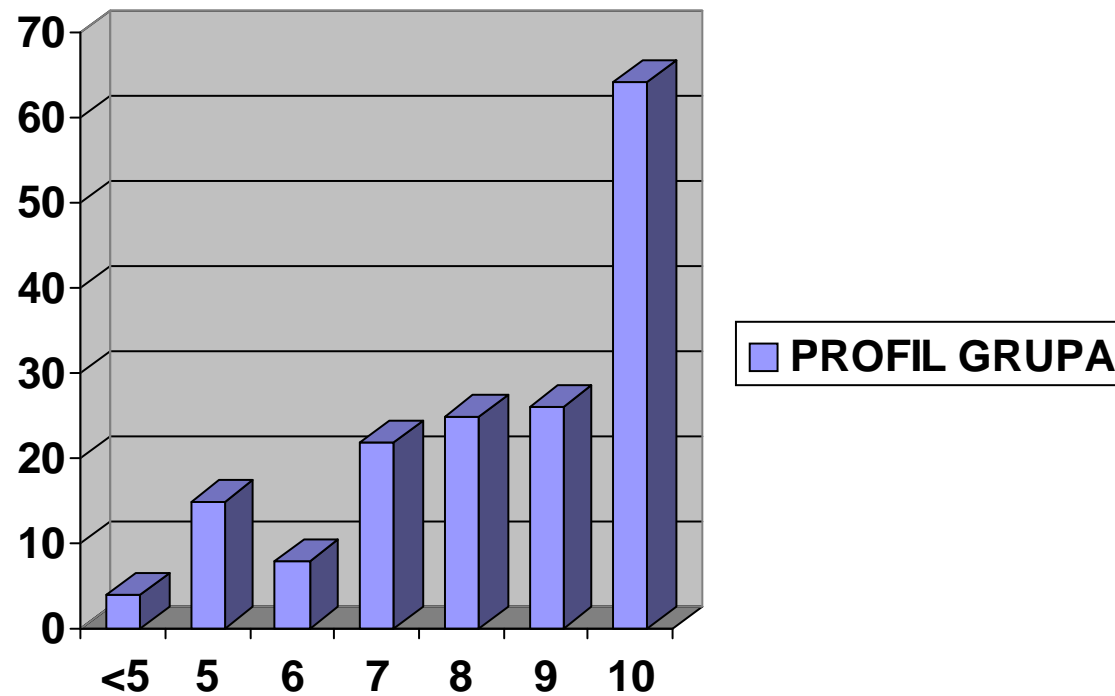


# FACULTATEA DE EDUCATIE FIZICA SI SPORT

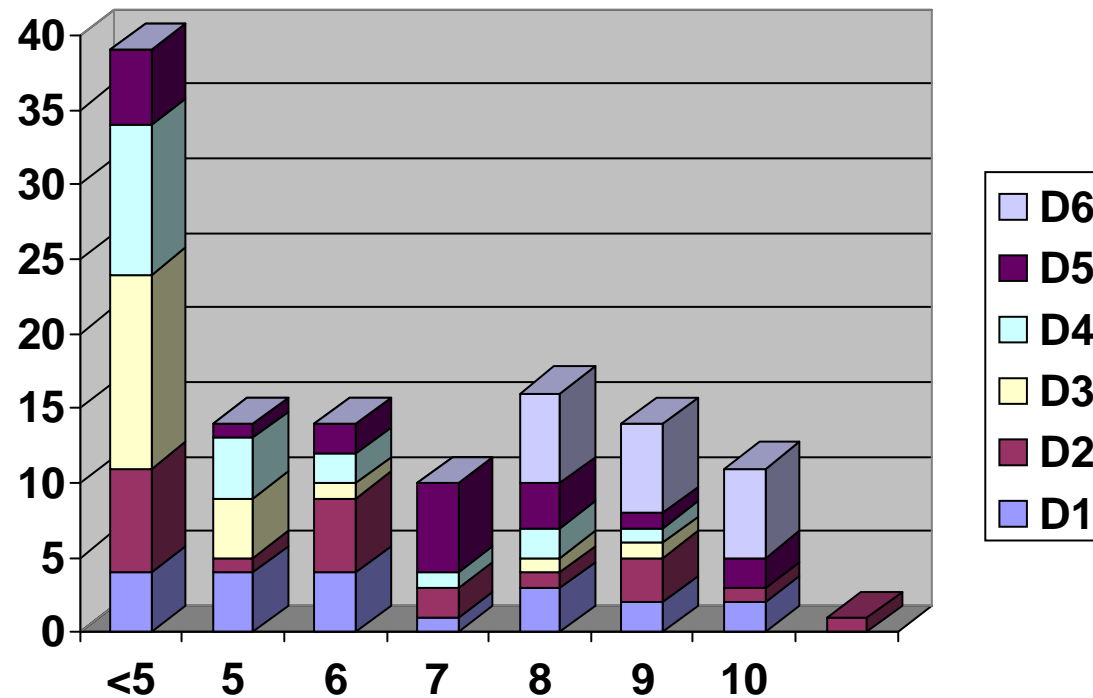




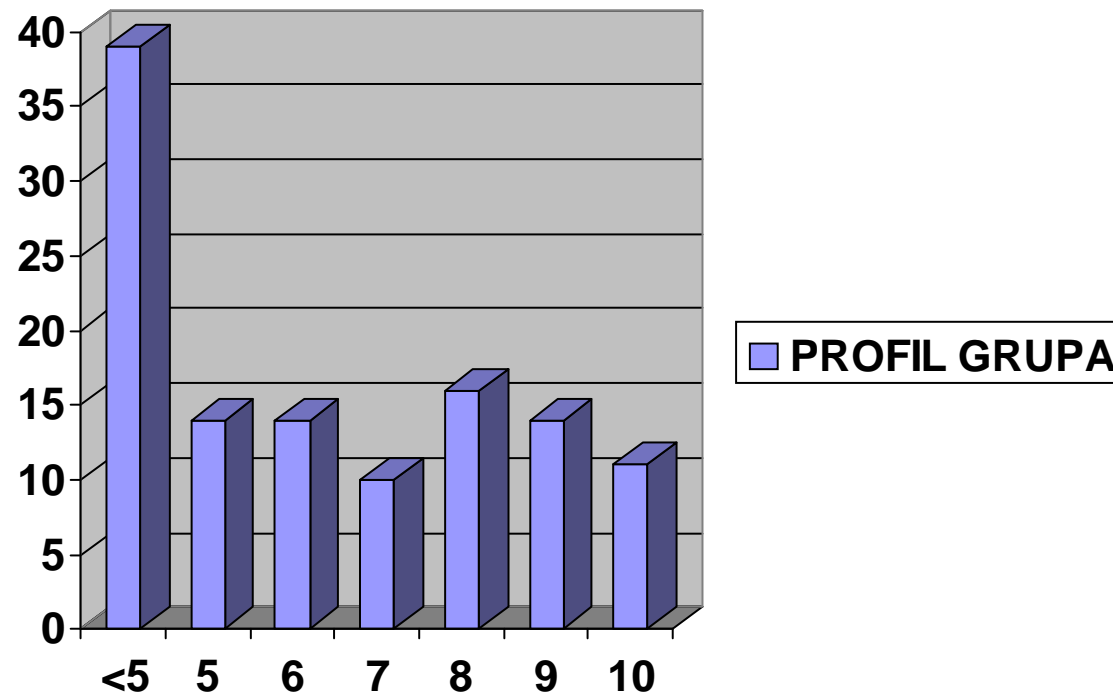
# FACULTATEA DE EDUCATIE FIZICA SI SPORT



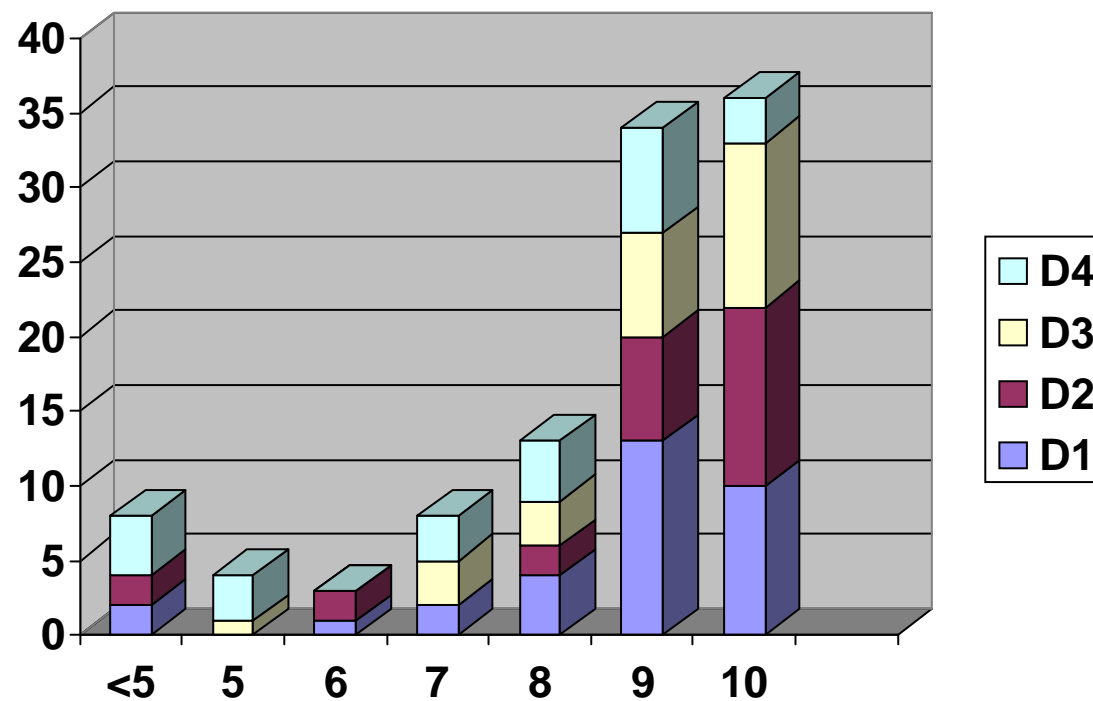
# FACULTATEA DE ELECTROMECHANICA



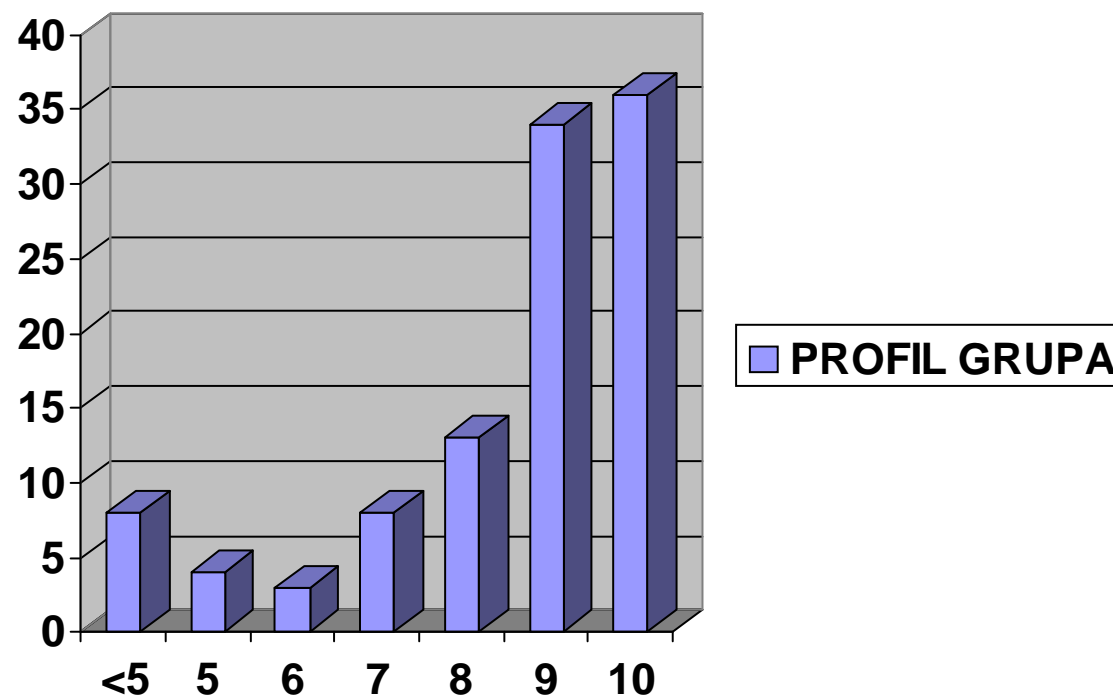
# FACULTATEA DE ELECTROMECHANICA



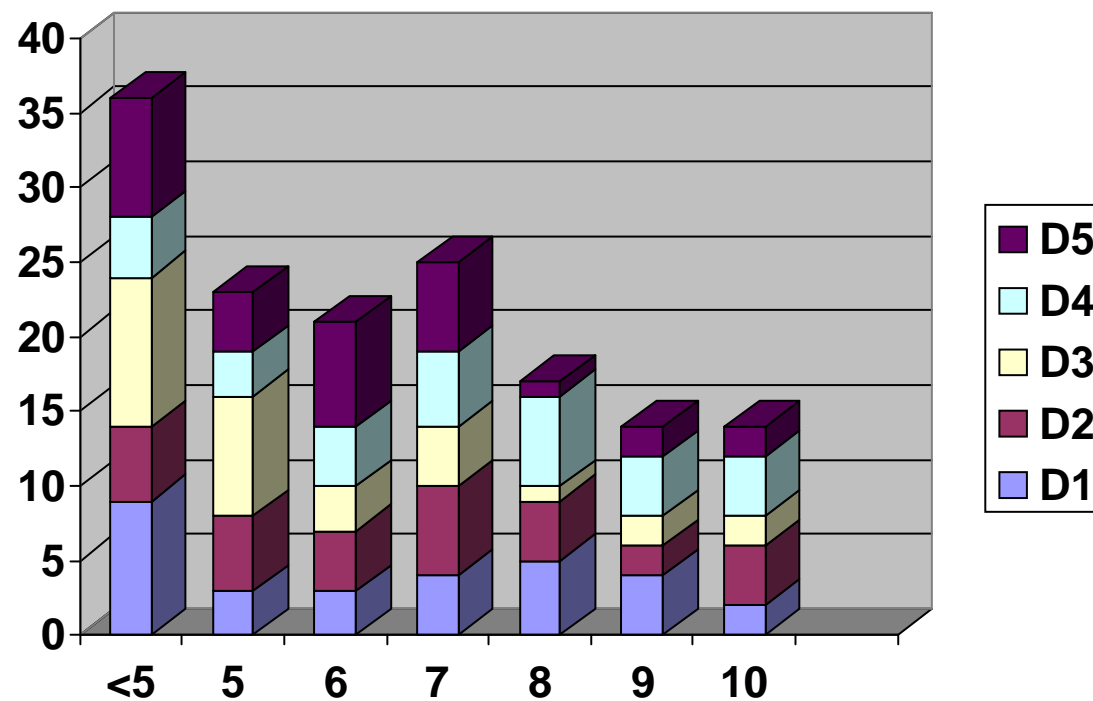
# FACULTATEA DE AGRICULTURA



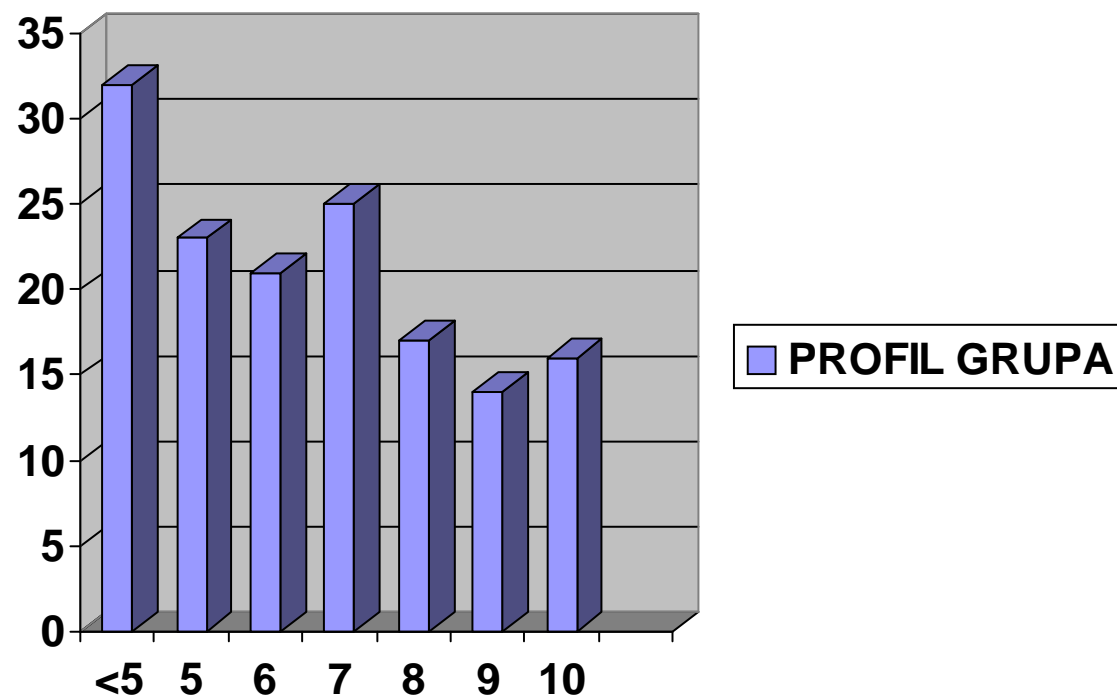
# FACULTATEA DE AGRICULTURA



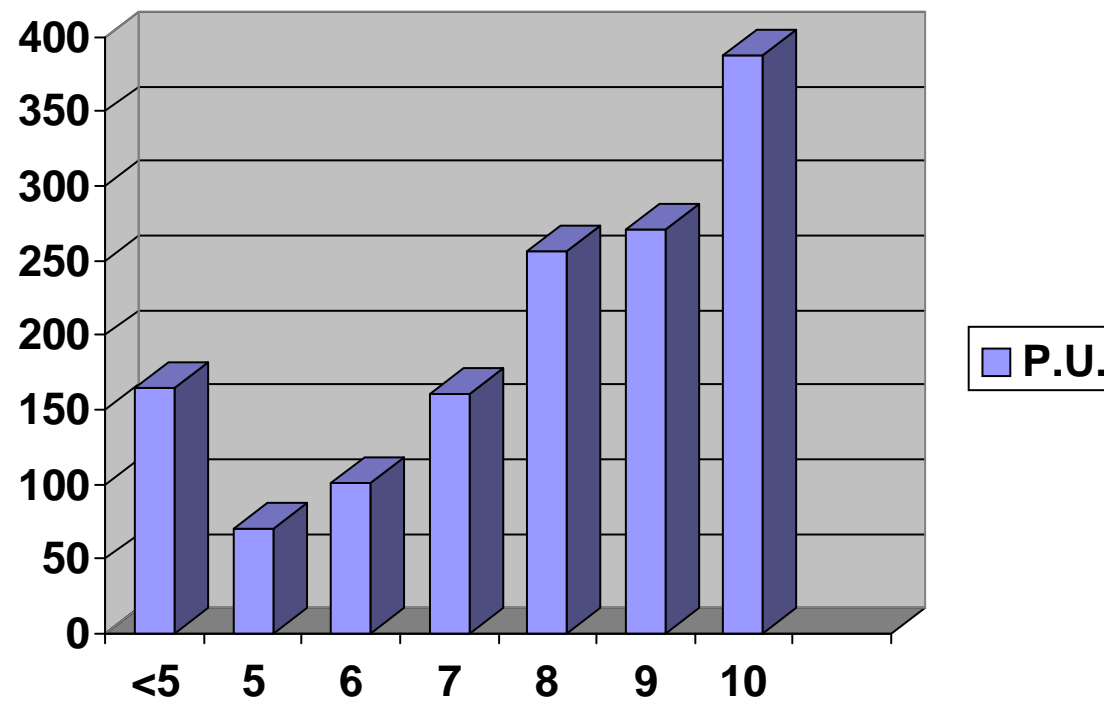
# FACULTATEA DE A.C.E



# FACULTATEA DE A.C.E

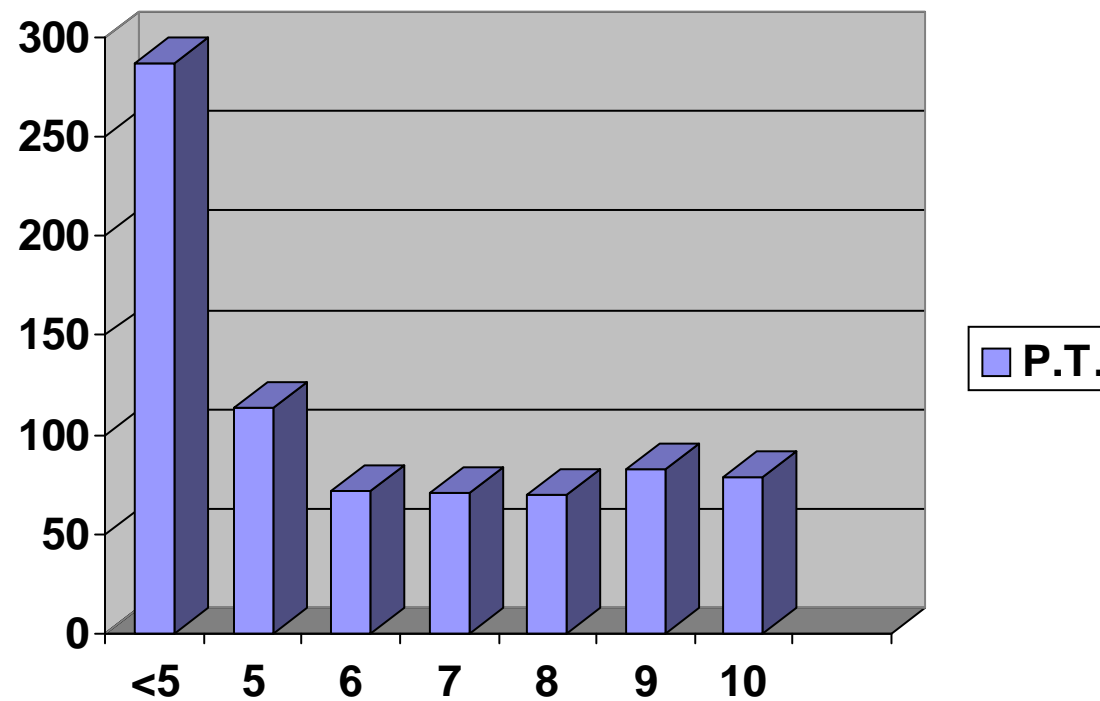


# PROFIL SPECIALIZARI DIN DOMENIUL UNIVERSITAR

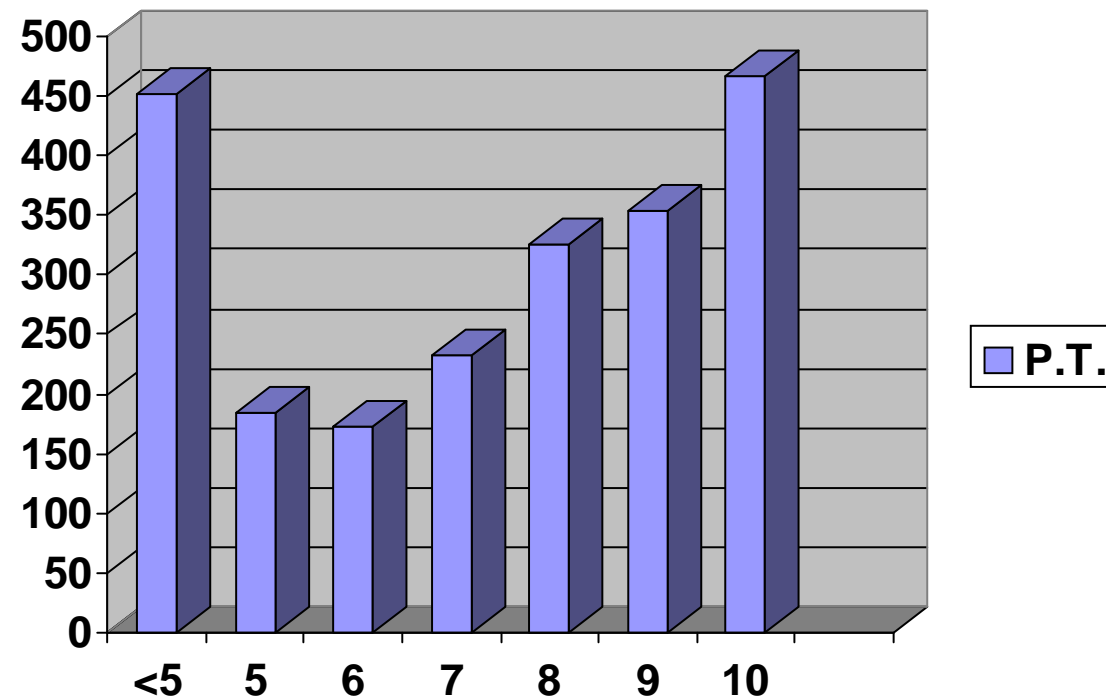




# PROFIL SPECIALIZARI DIN DOMENIUL TEHNIC

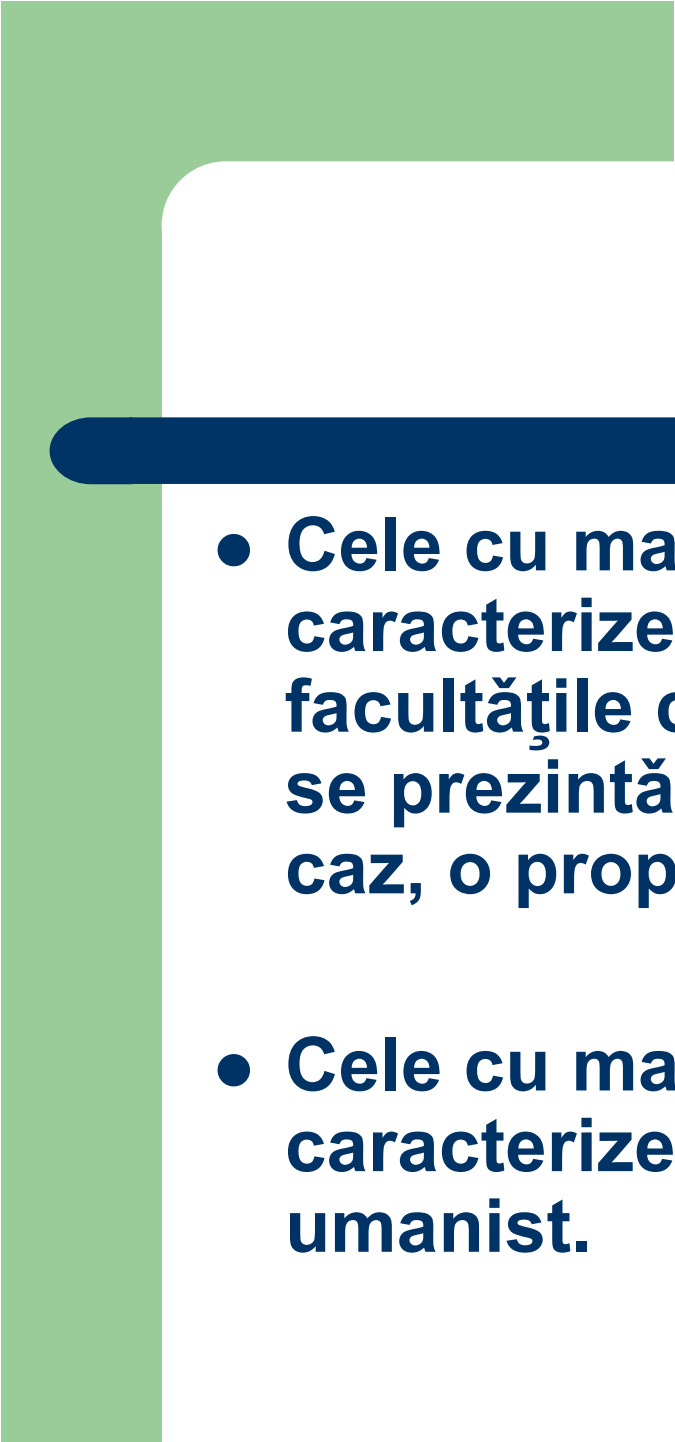





# PROFIL UNIVERSITATE




## CONCLUZII

- **Există, la nivel de disciplină, profile de notare foarte diverse.**
- **Se pot identifica două extreme: cele cu un maximum la stânga intervalului (note de 2-6) și cele cu un maxim la dreapta intervalului (note de 9-10).**

- 
- 
- **Cele cu maximum-ul la stânga intervalului caracterizează, cu preponderență, facultățile cu profil tehnic. Studenții care nu se prezintă la examen reprezintă, în acest caz, o proporție importantă.**
  - **Cele cu maximum-ul la dreapta, caracterizează facultățile din domeniul umanist.**

- 
- 
- **Profilul specializărilor din domeniul universitar și profilul specializărilor din domeniul tehnic sunt aproape simetrice.**
  - **La nivel de universitate, din punctul de vedere al notării, ponderea specializărilor din domeniul universitar este mai mare decât ponderea specializărilor din domeniul tehnic.**

- 
- 
- **Pentru clarificarea anumitor aspecte este necesară reluarea acțiunii după sesiunea de vară.**